

# DESIGN

These Tools & Documents Help You Design Your EtherNet/IP System

## General Resources

### Basic Resources

EtherNet/IP Design Guide  
(ENET-RM002A-EN-P)  
[literature.rockwellautomation.com](http://literature.rockwellautomation.com)  
EtherNet/IP Capacity Tool  
[ab.com/go/iatools](http://ab.com/go/iatools)  
Integrated Architecture Builder  
[rockwellautomation.com/en/e-tools](http://rockwellautomation.com/en/e-tools)

### Intermediate Resources

EtherNet/IP Book of Knowledge  
(Knowledgebase Answer ID 57174)  
[rockwellautomation.com/support](http://rockwellautomation.com/support)  
IA Recommended Literature  
Reference Manual  
(IASIMP-RM002-EN-P)  
[ab.com/go/iatools](http://ab.com/go/iatools)

### Advanced Resources

Converged Plantwide Ethernet  
(CPWE) Design & Implementation  
Guide (ENET-TD001-EN-P)  
[ab.com/go/iatools](http://ab.com/go/iatools)  
RSNetwork for EtherNet/IP Offline  
(9357ENETL3)  
[rockwellautomation.com/support](http://rockwellautomation.com/support)

## Controllers

### Basic Resources

EtherNet/IP Design Guide  
(ENET-RM002A-EN-P)  
[literature.rockwellautomation.com](http://literature.rockwellautomation.com)  
EtherNet/IP Capacity Tool  
[ab.com/go/iatools](http://ab.com/go/iatools)

### Intermediate Resources

EtherNet/IP Modules in Logix5000  
Control Systems (ENET-UM001-EN-P)  
[literature.rockwellautomation.com](http://literature.rockwellautomation.com)

### Advanced Resources

Logix5000 Controllers Design  
Considerations Reference Manual  
(1756-RM094F-EN-P)  
[literature.rockwellautomation.com](http://literature.rockwellautomation.com)

## Motion

### Basic Resources

EtherNet/IP Design Guide  
(ENET-RM002A-EN-P)  
[literature.rockwellautomation.com](http://literature.rockwellautomation.com)  
CIP Motion Popular Configuration  
Drawing With Notes  
(IASIMP-QR019B-EN-P)  
[ab.com/go/iatools](http://ab.com/go/iatools)  
EtherNet/IP Capacity Tool  
[ab.com/go/iatools](http://ab.com/go/iatools)

### Intermediate Resources

CIP Motion Configuration and  
Startup User Manual  
(MOTION-UM003B-EN-P)  
[literature.rockwellautomation.com](http://literature.rockwellautomation.com)

### Advanced Resources

Drives and Motion Accelerator Toolkit  
(IASIMP-SP017A-EN-C)  
[ab.com/go/iatools](http://ab.com/go/iatools)

## Safety

### Basic Resources

EtherNet/IP Design Guide  
(ENET-RM002A-EN-P)  
[literature.rockwellautomation.com](http://literature.rockwellautomation.com)  
EtherNet/IP Capacity Tool  
[ab.com/go/iatools](http://ab.com/go/iatools)

### Intermediate Resources

Safety Accelerator for  
GuardLogix Systems Toolkit  
(SAFETY-CL002)  
[ab.com/go/iatools](http://ab.com/go/iatools)

### Advanced Resources

Safety Accelerator for GuardLogix  
Systems Toolkit/GuardLogix Tools  
(SAFETY-CL002)  
[ab.com/go/iatools](http://ab.com/go/iatools)

## Stratix Switch

### Basic Resources

EtherNet/IP Design Guide  
(ENET-RM002A-EN-P)  
[literature.rockwellautomation.com](http://literature.rockwellautomation.com)  
Stratix Switch Reference Chart  
(ENET-QR001D-EN-E)  
[literature.rockwellautomation.com](http://literature.rockwellautomation.com)

### Intermediate Resources

EtherNet/IP Embedded Switch  
Technology Application Guide  
(ENET-AP005-EN-P)  
[literature.rockwellautomation.com](http://literature.rockwellautomation.com)

### Advanced Resources

Stratix Managed Switches within the  
Integrated Architecture Whitepaper  
(ENET-WP008A-EN-E)  
[literature.rockwellautomation.com](http://literature.rockwellautomation.com)

## Infrastructure/Cabling

### Basic Resources

EtherNet/IP Physical Media Catalog  
Pages (1585-CA500-EN-P)  
[literature.rockwellautomation.com](http://literature.rockwellautomation.com)

### Intermediate Resources

Guidance for Selecting Cables  
for EtherNet/IP Networks  
(ENET-WP007-EN-P)  
[literature.rockwellautomation.com](http://literature.rockwellautomation.com)

### Advanced Resources

EtherNet/IP Benefits of Industrial  
Connectivity in Industrial  
Applications (1585-WP001-EN-P)  
[literature.rockwellautomation.com](http://literature.rockwellautomation.com)

## WAN / Enterprise

## HMI

### Basic Resources

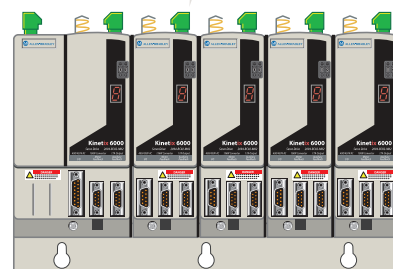
EtherNet/IP Design Guide  
(ENET-RM002A-EN-P)  
[literature.rockwellautomation.com](http://literature.rockwellautomation.com)

### Intermediate Resources

PanelView Plus 6 Terminals  
User Manual (2711P-UM006A-EN-P)  
[literature.rockwellautomation.com](http://literature.rockwellautomation.com)

### Advanced Resources

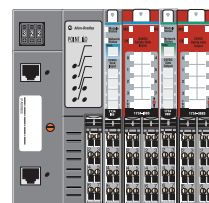
Logix/PanelView Plus  
Calculator Tool (ID MMS\_054334)  
[rockwellautomation.com/support](http://rockwellautomation.com/support)



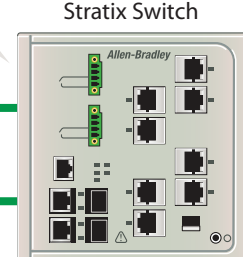
Motion



Controllers



Safety



Stratix Switch

## Distributed I/O

### Basic Resources

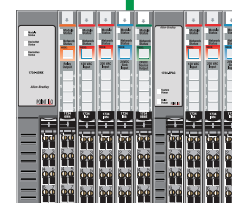
EtherNet/IP Design Guide  
(ENET-RM002A-EN-P)  
[literature.rockwellautomation.com](http://literature.rockwellautomation.com)  
EtherNet/IP Capacity Tool  
[ab.com/go/iatools](http://ab.com/go/iatools)

### Intermediate Resources

EtherNet/IP Modules in  
Logix5000 Control Systems  
(ENET-UM001-EN-P)  
[literature.rockwellautomation.com](http://literature.rockwellautomation.com)

### Advanced Resources

RSNetWorx for EtherNet/IP  
Offline (9357ENETL3)  
[rockwellautomation.com/support](http://rockwellautomation.com/support)



Distributed I/O



Standard Drives

## Standard Drives

### Basic Resources

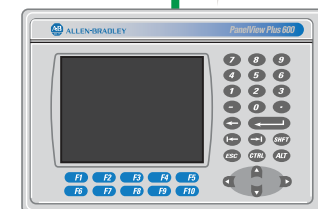
EtherNet/IP Design Guide  
(ENET-RM002A-EN-P)  
[literature.rockwellautomation.com](http://literature.rockwellautomation.com)  
EtherNet/IP Capacity Tool  
[ab.com/go/iatools](http://ab.com/go/iatools)

### Intermediate Resources

EtherNet/IP Modules in  
Logix5000 Control Systems  
(ENET-UM001-EN-P)  
[literature.rockwellautomation.com](http://literature.rockwellautomation.com)

### Advanced Resources

RSNetWorx for EtherNet/IP  
Offline (9357ENETL3)  
[rockwellautomation.com/support](http://rockwellautomation.com/support)



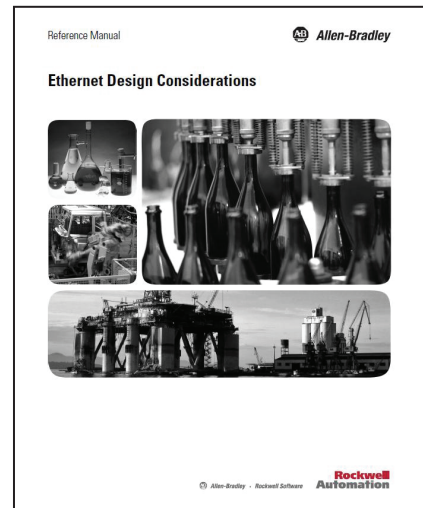
HMI

# These Tools & Documents Help You Design Your EtherNet/IP System

## EtherNet/IP Design Considerations

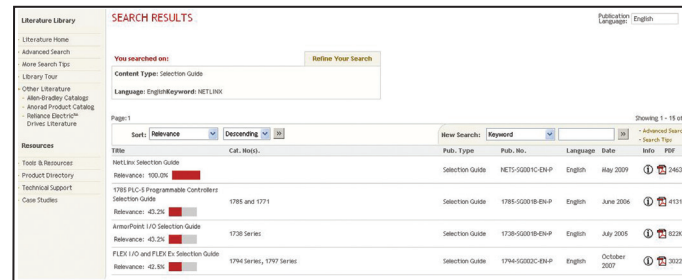
### What It Is:

Your starting point for designing your EtherNet/IP system. This document walks you through the process of understanding and selecting the EtherNet/IP topology, infrastructure, and products that you need.



### Where To Get It:

Go to the Literature Library Website . . .



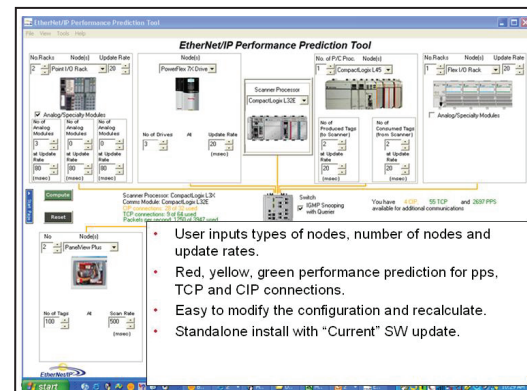
[literature.rockwellautomation.com](http://literature.rockwellautomation.com)



## EtherNet/IP Capacity Tool

### What It Is:

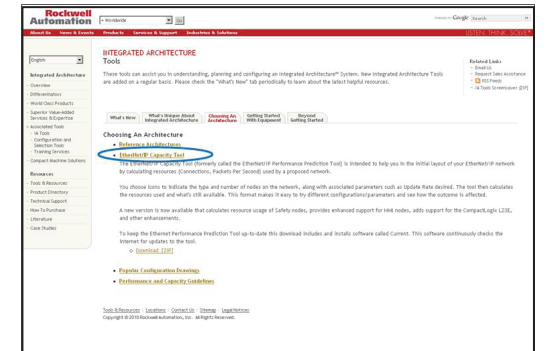
This tool helps you in the initial layout of your EtherNet/IP network by calculating resources (Connections, Packets Per Second) used by your proposed network.



- User inputs types of nodes, number of nodes and update rates.
- Red, yellow, green performance prediction for pps, TCP and CIP connections.
- Easy to modify the configuration and recalculate.
- Standalone install with "Current" SW update.

### Where To Get It:

Go to the Integrated Architecture Tools Website. . .

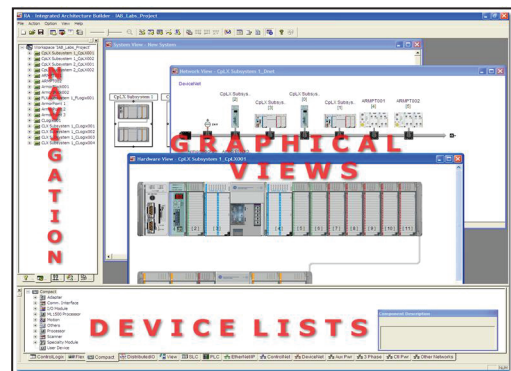


[ab.com/go/iatools](http://ab.com/go/iatools)

## Integrated Architecture Builder

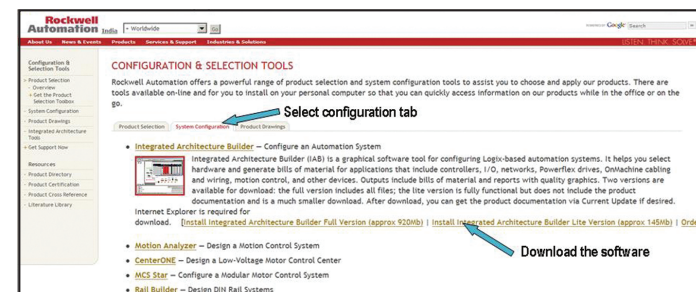
### What It Is:

Integrated Architecture Builder helps you configure Logix based automation systems, including EtherNet/IP wizards to validate your network and select physical media.



### Where To Get It:

Go to the Configuration and Selection Tools Website . . .

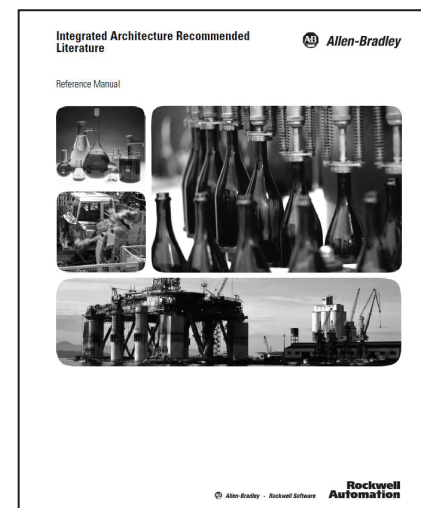


[rockwellautomation.com/en/e-tools](http://rockwellautomation.com/en/e-tools)

## Integrated Architecture Bookshelf

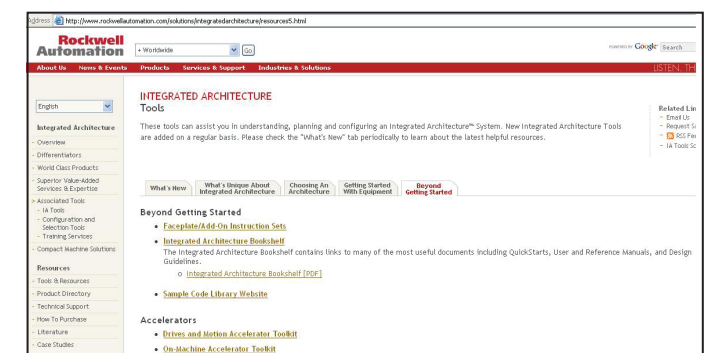
### What It Is:

The Integrated Architecture Bookshelf is a single point reference document with links to the most useful EtherNet/IP documents such as QuickStarts, User and Reference Manuals, and Design Guidelines.



### Where To Get It:

Go to the Integrated Architecture Tools Website. . .

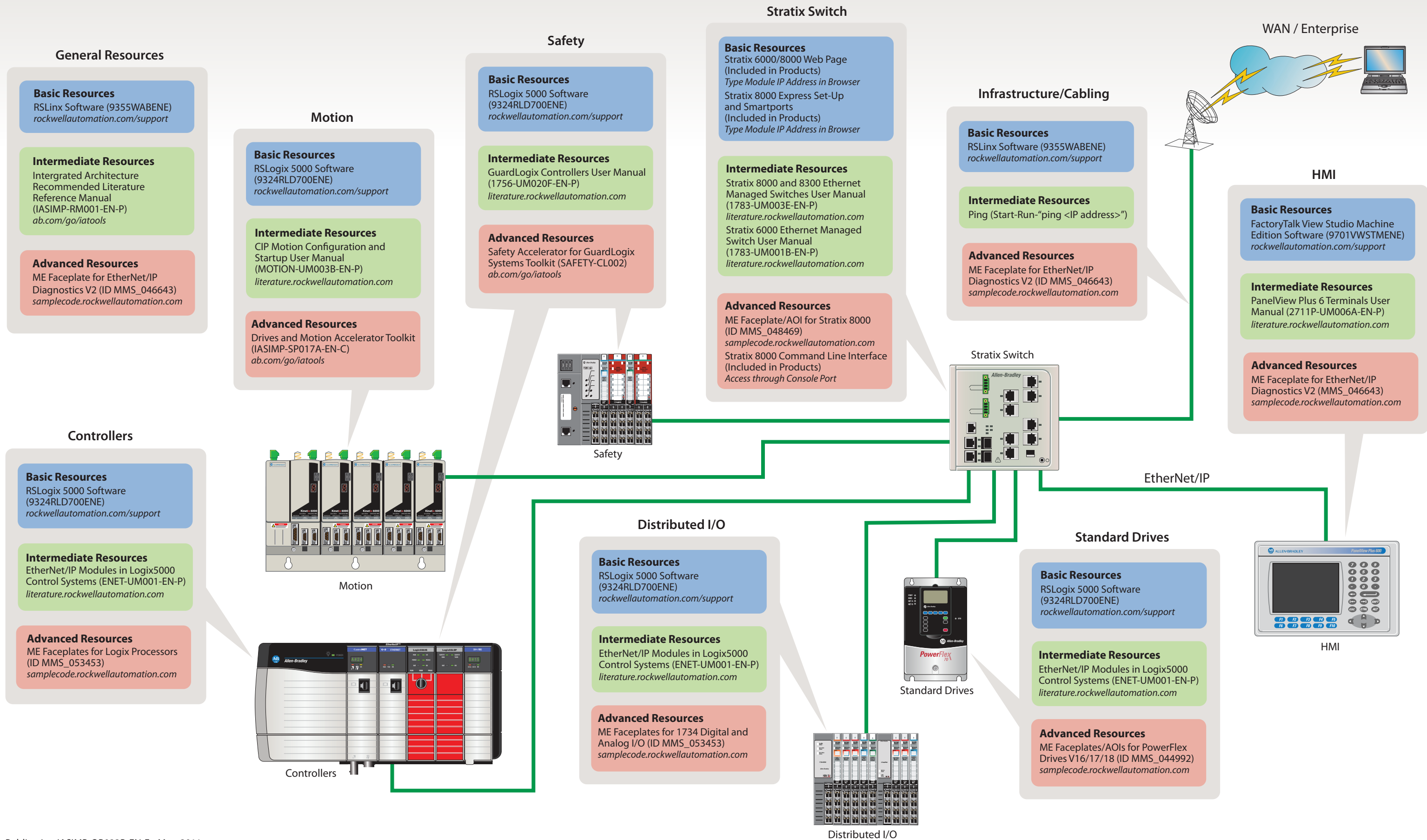


[ab.com/go/iatools](http://ab.com/go/iatools)



# COMMISSIONING

These Tools & Documents Help You Commission Your EtherNet/IP System

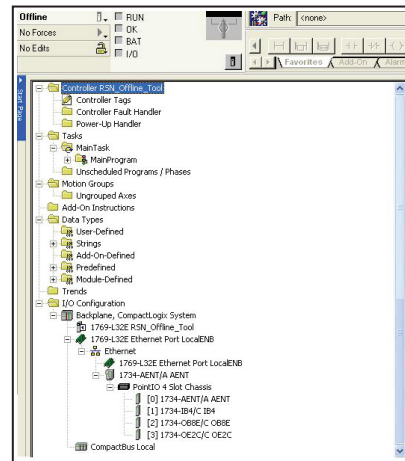


## These Tools & Documents Help You Commission Your EtherNet/IP System

# RSLogix5000

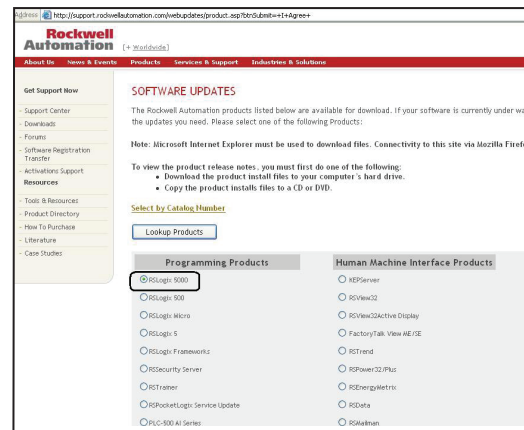
## What It Is:

A single software platform that allows you to configure and commission all of your EtherNet/IP devices. No other network configuration Software is required.



### Where To Get It:

Available for download from the  
Rockwell Automation Technical  
Support site ...

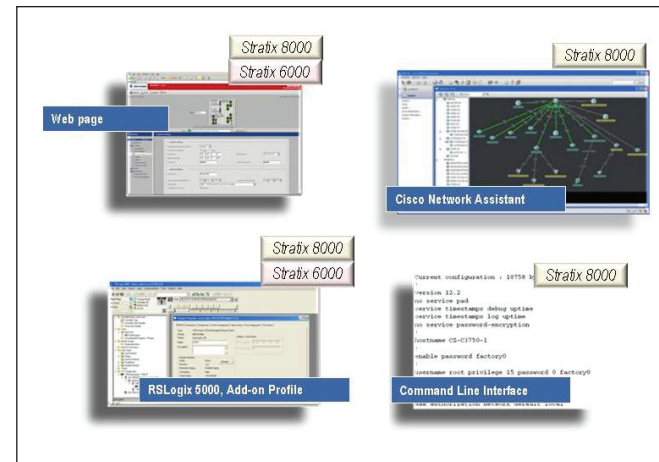


[rockwellautomation.com/support](http://rockwellautomation.com/support)

# Stratix Configuration Tools

### What It Is:

A set of common configuration tools for the entire family of Stratix switches.



### Where To Get It:

Stratix 6000/8000 Web Page  
(Included in Products)

Stratix 6000/8000 RSLogix5000  
Add On Profiles (Included in  
RSLogix5000 software)

Cisco Network Assistant (free download from Cisco)

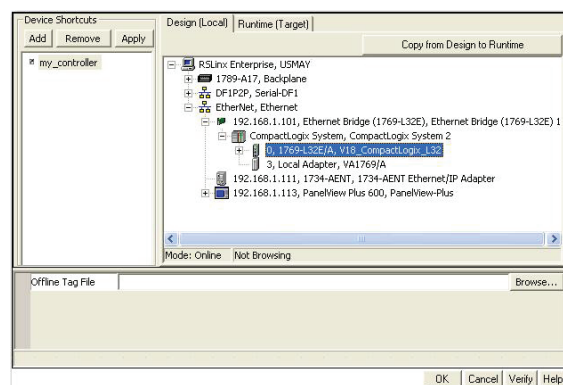
## Stratix 8000 Command Line Interface (Included in Product)



# FactoryTalk View Studio

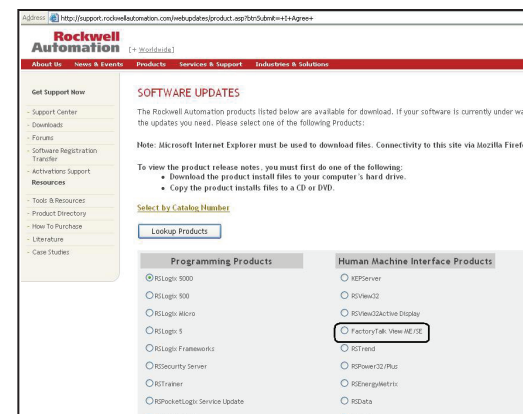
### What It Is:

A single software platform for all your  
FTView SE and ME Operator Interfaces  
that allows you to link to all your  
EtherNet/IP processors and access tag data.



## Where To Get It:

Available for download from the  
Rockwell Automation Technical  
Support site ...



[rockwellautomation.com/support](http://rockwellautomation.com/support)

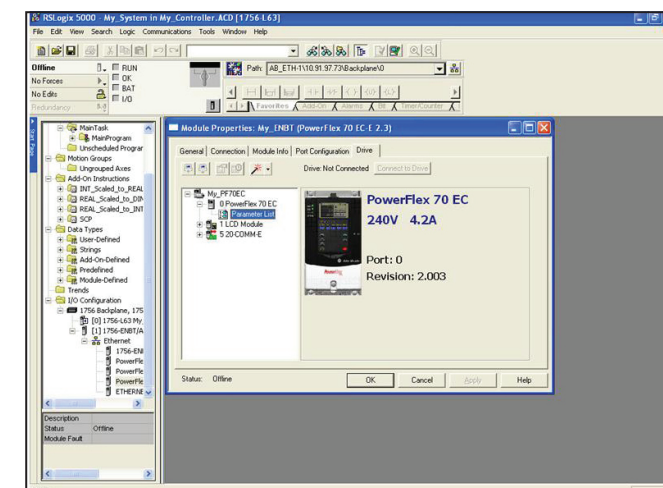
## PowerFlex/Kinetix Premier Integration

### What It Is:

Integrated Drive Profiles in RSLogix5000 software allow you to use one software tool to configure the entire Logix/drive system.

### Where To Get It:

Included with your RSLogix5000 software.



# TROUBLESHOOTING

These Tools & Documents Help You Troubleshoot Your EtherNet/IP System

## General Resources

**Basic Resources**  
EtherNet/IP Book of Knowledge  
(Knowledgebase Answer ID 57174)  
[rockwellautomation.com/support](http://rockwellautomation.com/support)  
RSLinx Software (9355WABENE)  
[rockwellautomation.com/support](http://rockwellautomation.com/support)

**Intermediate Resources**  
Ping (Start-Run-"ping <IP address>")  
EtherNet/IP System Troubleshooting  
(KB 26413)  
[knowledgebase](http://knowledgebase)

**Advanced Resources**  
ME Faceplate for EtherNet/IP  
Diagnostics V2 (ID MMS\_046643)  
[samplecode.rockwellautomation.com](http://samplecode.rockwellautomation.com)  
System "Ferret" [ab.com/go/iatools](http://ab.com/go/iatools)  
Wireshark [www.wireshark.org](http://www.wireshark.org)

## Motion

**Basic Resources**  
RSLinx Software (9355WABENE)  
[rockwellautomation.com/support](http://rockwellautomation.com/support)  
Module Web Page  
(Included in Products)  
Type Module IP Address in Browser

**Intermediate Resources**  
Ping (Start-Run-"ping <IP address>")  
CIP Motion Configuration and  
Startup User Manual  
(MOTION-UM003B-EN-P)  
[literature.rockwellautomation.com](http://literature.rockwellautomation.com)

**Advanced Resources**  
ME Faceplate/AOI for Kinetix Servo  
Drives (MMS\_053014)  
[samplecode.rockwellautomation.com](http://samplecode.rockwellautomation.com)  
Wireshark [www.wireshark.org](http://www.wireshark.org)

## Safety

**Basic Resources**  
RSLinx Software (9355WABENE)  
[rockwellautomation.com/support](http://rockwellautomation.com/support)  
Module Web Page  
(Included in Products)  
Type Module IP Address in Browser

**Intermediate Resources**  
Ping (Start-Run-"ping <IP address>")  
EtherNet/IP Modules in Logix5000  
Control Systems (ENET-UM001-EN-P)  
[literature.rockwellautomation.com](http://literature.rockwellautomation.com)

**Advanced Resources**  
ME Faceplates/AOIs for GuardLogix  
Safety Systems (MMS\_047416)  
[samplecode.rockwellautomation.com](http://samplecode.rockwellautomation.com)  
Wireshark [www.wireshark.org](http://www.wireshark.org)

## Stratix Switch

**Basic Resources**  
Stratix 6000/8000 Web Page  
(Included in Products)  
Type Module IP Address in Browser  
Cisco Network Assistant  
(free download from Cisco)  
[cisco.com](http://cisco.com)

**Intermediate Resources**  
Stratix 6000/8000 RSLogix5000  
Add On Profiles  
(Included in RSLogix5000 software)

**Advanced Resources**  
ME Faceplate/AOI for Stratix 8000  
(ID MMS\_048469)  
[samplecode.rockwellautomation.com](http://samplecode.rockwellautomation.com)  
Stratix 8000 Command Line Interface  
(Included in Product)  
Access through Console Port

## Infrastructure/Cabling

**Basic Resources**  
EtherNet/IP Book of Knowledge  
(Knowledgebase Answer ID 57174)  
[rockwellautomation.com/support](http://rockwellautomation.com/support)  
**IA Tools Website**  
RSLinx (9355WABENE)  
[rockwellautomation.com/support](http://rockwellautomation.com/support)

**Intermediate Resources**  
Ping (Start-Run-"ping <IP address>")  
EtherNet/IP System Troubleshooting  
(Knowledgebase Answer ID 26413)  
[rockwellautomation.com/support](http://rockwellautomation.com/support)

**Advanced Resources**  
Wireshark [www.wireshark.org](http://www.wireshark.org)

## WAN / Enterprise

## HMI

**Basic Resources**  
RSLinx (9355WABENE)  
[rockwellautomation.com/support](http://rockwellautomation.com/support)  
Module Web Page  
(Included in Products)  
Type Module IP Address in Browser

**Intermediate Resources**  
Ping (Start-Run-"ping <IP address>")  
PanelView Plus 6 Terminals User  
Manual (2711P-UM006A-EN-P)  
[literature.rockwellautomation.com](http://literature.rockwellautomation.com)

**Advanced Resources**  
Wireshark [www.wireshark.org](http://www.wireshark.org)

## Controllers

**Basic Resources**  
RSLinx Software (9355WABENE)  
[rockwellautomation.com/support](http://rockwellautomation.com/support)  
Module Web Page  
(Included in Products)  
Type Module IP Address in Browser

**Intermediate Resources**  
Ping (Start-Run-"ping <IP address>")  
EtherNet/IP Modules in Logix5000  
Control Systems (ENET-UM001-EN-P)  
[literature.rockwellautomation.com](http://literature.rockwellautomation.com)

**Advanced Resources**  
ME Faceplates for Logix Processors  
(ID MMS\_053453)  
**Sample Code Website**  
Wireshark [www.wireshark.org](http://www.wireshark.org)

## Distributed I/O

**Basic Resources**  
RSLinx Software (9355WABENE)  
[rockwellautomation.com/support](http://rockwellautomation.com/support)  
Module Web Page  
(Included in Products)  
Type Module IP Address in Browser

**Intermediate Resources**  
Ping (Start-Run-"ping <IP address>")  
EtherNet/IP Modules in Logix5000  
Control Systems (ENET-UM001-EN-P)  
[literature.rockwellautomation.com](http://literature.rockwellautomation.com)

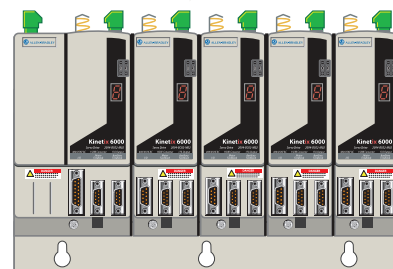
**Advanced Resources**  
ME Faceplates for 1734 Digital and  
Analog I/O (ID MMS\_053453)  
[samplecode.rockwellautomation.com](http://samplecode.rockwellautomation.com)  
Wireshark [www.wireshark.org](http://www.wireshark.org)

## Standard Drives

**Basic Resources**  
RSLinx Software (9355WABENE)  
[rockwellautomation.com/support](http://rockwellautomation.com/support)  
Module Web Page  
(Included in Products)  
Type Module IP Address in Browser

**Intermediate Resources**  
Ping (Start-Run-"ping <IP address>")  
EtherNet/IP Modules in Logix5000  
Control Systems (ENET-UM001-EN-P)  
[literature.rockwellautomation.com](http://literature.rockwellautomation.com)

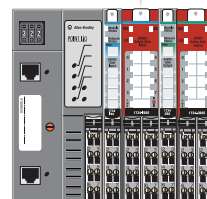
**Advanced Resources**  
ME Faceplates/AOIs for PowerFlex  
Drives V16/17/18 (ID MMS\_044992)  
[samplecode.rockwellautomation.com](http://samplecode.rockwellautomation.com)  
Wireshark [www.wireshark.org](http://www.wireshark.org)



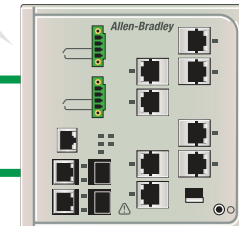
Motion



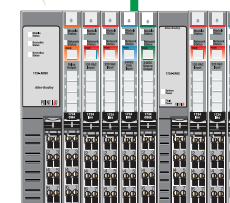
Controllers



Safety



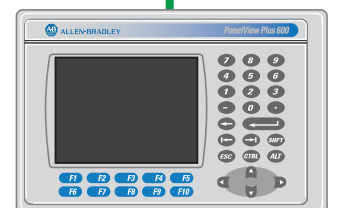
Stratix Switch



Distributed I/O



Standard Drives



HMI



# These Tools & Documents Help You Troubleshoot Your EtherNet/IP System

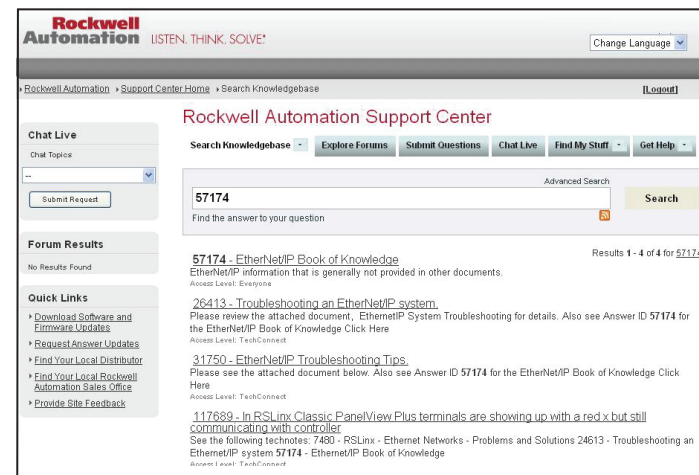
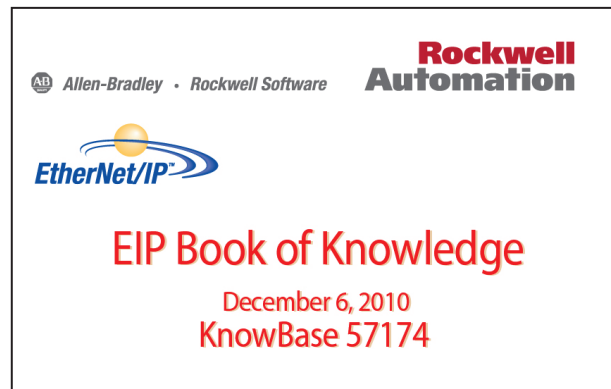
## EtherNet/IP Book of Knowledge

### What It Is:

A reference document that contains information on a variety of EtherNet/IP topics, including troubleshooting your network.

### Where To Get It:

Available for download from the Technical Support Knowledgebase...



[rockwellautomation.com/support](http://rockwellautomation.com/support)

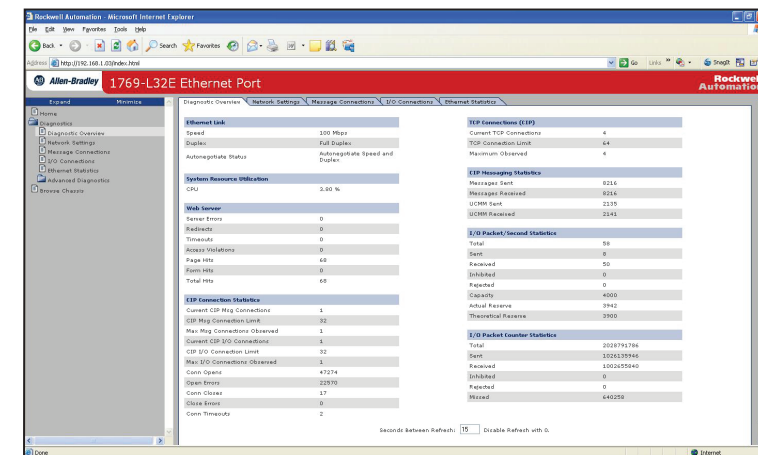
## Product Web Pages

### What It Is:

Each EtherNet/IP product has a web page with critical information you need to troubleshoot your system.

### Where To Get It:

Included with the products. All you need is your web browser and the IP address of the product to access.



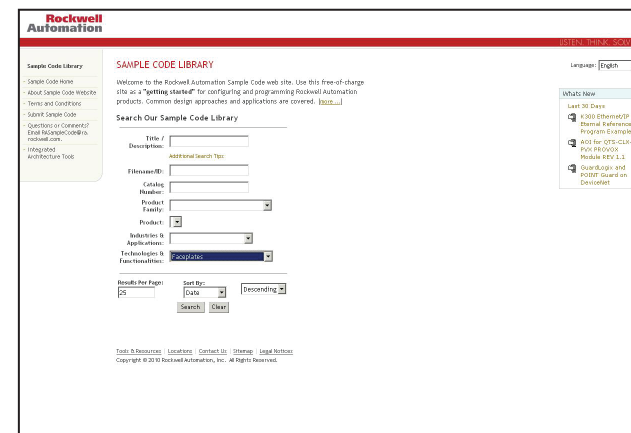
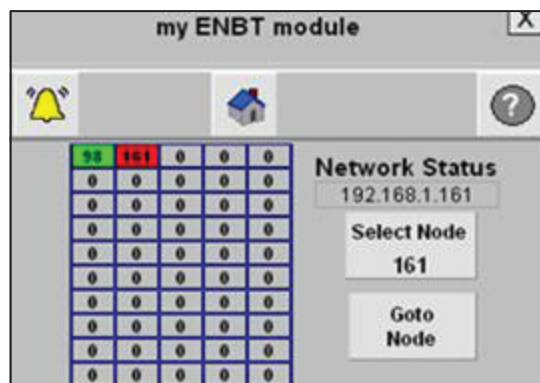
## Faceplates

### What It Is:

Faceplate/AOI sets that access existing diagnostic information in EtherNet/IP products to assist in the troubleshooting of your system.

### Where To Get It:

Available for download from the Sample Code Library.



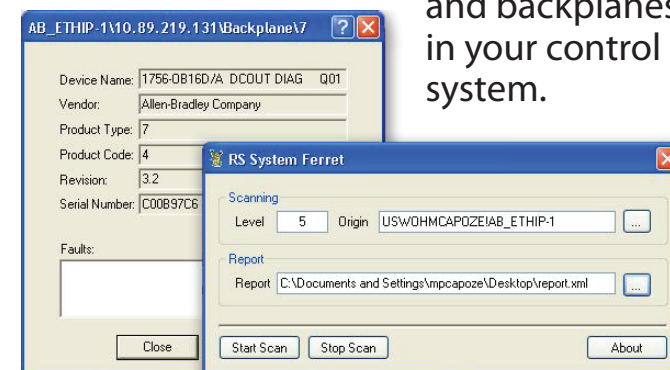
[samplecode.rockwellautomation.com](http://samplecode.rockwellautomation.com)

## System "Ferret"

### What It Is:

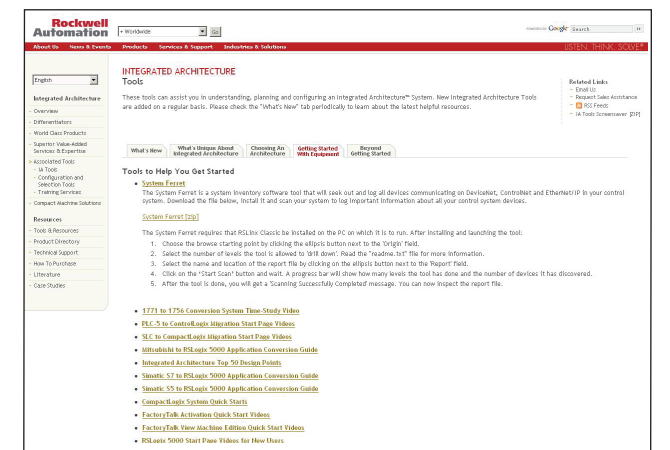
A system inventory software tool that will seek out and log all devices communicating on your EtherNet/IP network plus many of the other networks

and backplanes in your control system.



### Where To Get It:

Available for download from the Integrated Architecture Tools site...



[ab.com/go/iatools](http://ab.com/go/iatools)